

**AXOR Montreux**  
**HighArc Kitchen Faucet 2-Spray Pull-Down, 1.75 GPM**  
 Finish: **Steel Optic** Part no. : **16581801**



**Description**

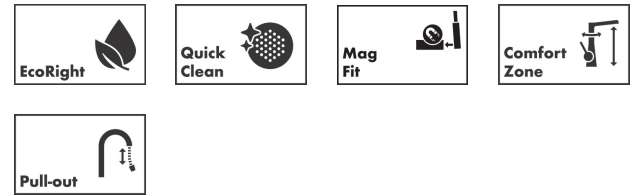
**Features**

- Swivel range 110° / 150°
- Laminar spray, needle spray, Shower spray pattern
- Toggle spray diverter
- MagFit magnetic sprayhead docking
- Deck mounted
- Max. flow: 1.75 GPM (6.6 L/Min)
- Ceramic cartridge
- 3/8" connections
- Integrated double backflow prevention
- Single lever kitchen mixer, connection hoses, Fastening set, Assembly instructions

**Item details**

List Price \$ 1,439.00

**Technology**



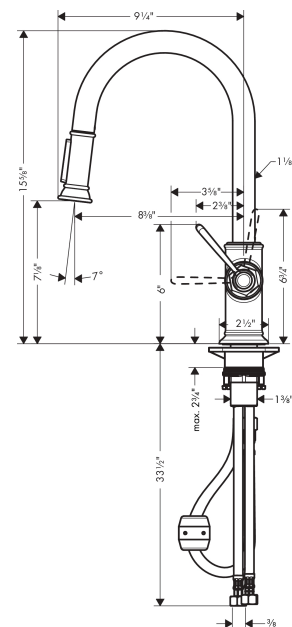
**Compliance / Sustainability**



**Product image**



**Scale drawing**

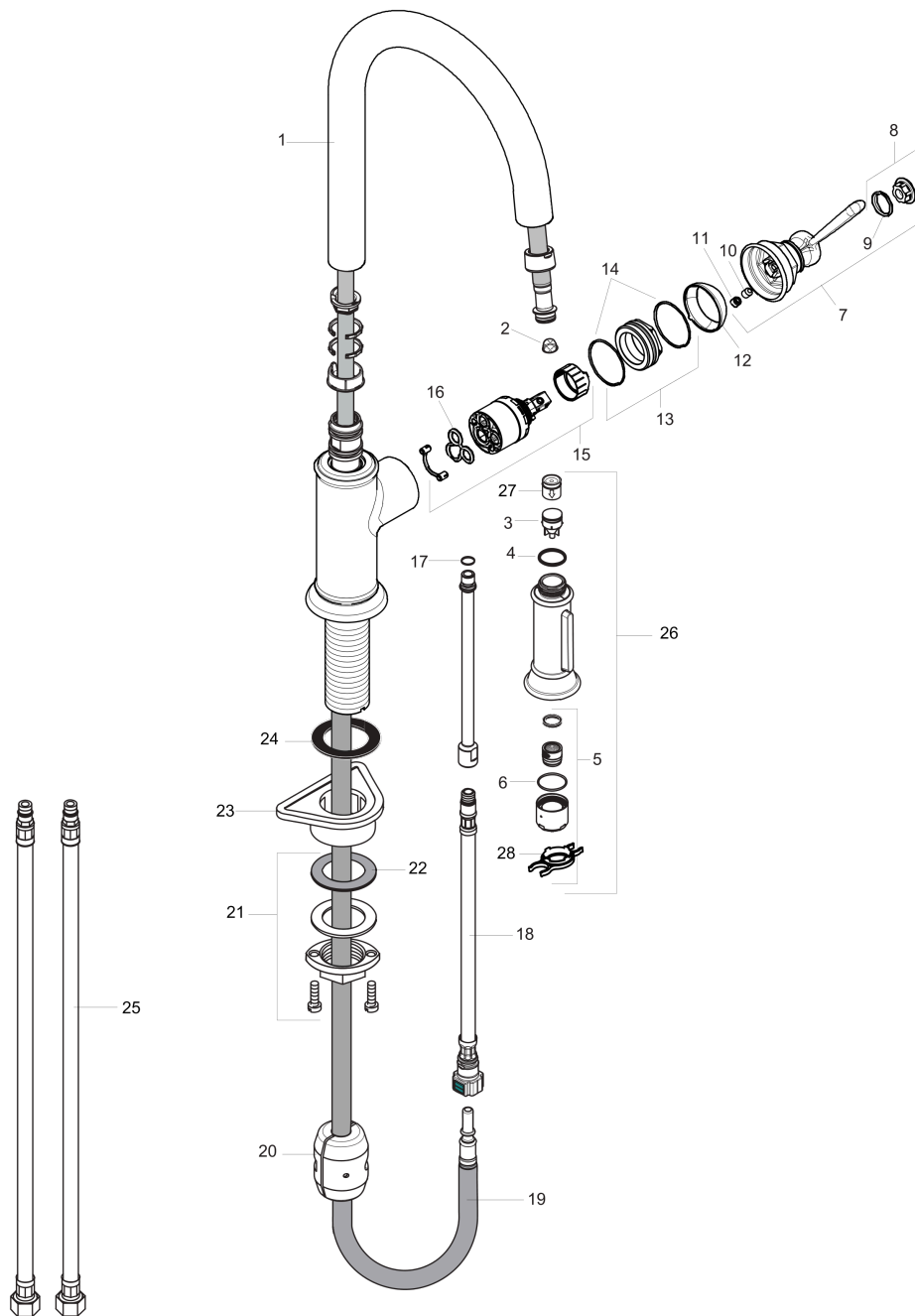


**AXOR Montreux**  
**HighArc Kitchen Faucet 2-Spray Pull-Down, 1.75 GPM**  
 Finish: **Steel Optic** Part no. : **16581801**



Exploded drawing

Year of production: >01/18



**AXOR Montreux**  
**HighArc Kitchen Faucet 2-Spray Pull-Down, 1.75 GPM**  
 Finish: **Steel Optic** Part no. : **16581801**



## Spare parts list

Year of production: >01/18

Pos.	Description	Part no.	Price	PU
1	spout cpl.	92972800	-	1
2	filter	97735000	-	1
3	set of non return valves DW 15	97350000	-	1
4	O-ring 18x1,5	98231000	-	1
5	aerator laminar M22x1 (15 l/min)	95909000	-	1
6	O-ring 20x1	98140000	-	1
7	handle	92963800	-	1
8	cover cap	92964000	-	1
9	O-ring 16x2	98133000	-	1
10	hollow set screw M6x8	98444000	-	1
11	screw cover	96762000	-	1
12	flange	92965800	-	1
13	nut	92966000	-	1
14	O-ring 33x1,5	98164000	-	1
15	cartridge, assy	92730000	-	1
16	seal	95008000	-	1
17	O-ring 8x1,75	97827000	-	1
18	connection hose 600 mm M10x1	95561000	-	1
19	hose 1,50 m	88624000	-	1
20	weight	92500000	-	1
21	fixing set (Ø 34)	95049000	-	1
22	lever collar	97548000	-	1
23	support	97523000	-	1
24	seal	92582000	-	1
25	connection hose 35½" M8x0,75 3/8"	96316001	-	1
26	handspray	92967801	-	1
27	non return valve	93218000	-	1
28	service tool	95910000	-	1