

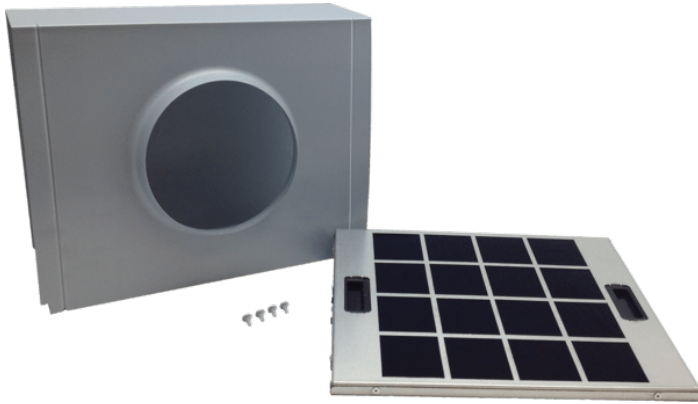
HCREC5UC

Wall Chimney Recirc. Kit

300 / 500 Series - Stainless Steel



Features and Benefits



Notes: All height, width and depth dimensions are shown in inches. *Please refer to installation instructions prior to making cutout. BSH reserves the absolute and unrestricted right to change product materials and specifications, at any time, without notice. Consult the product's installation instructions for final dimensional data and other details. Applicable product warranty can be found in a accompanying product literature or you may contact your account manager for further details.

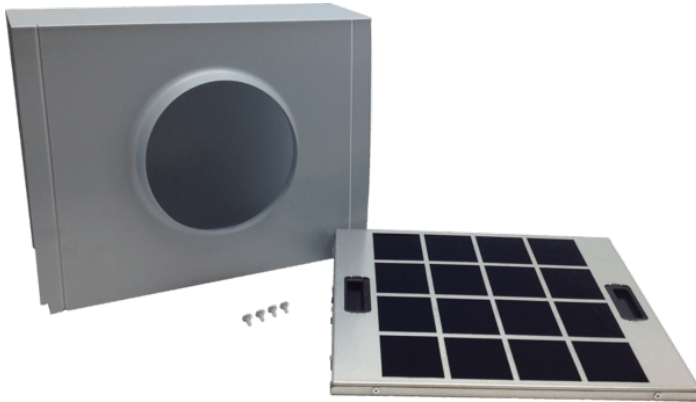
For more information on our entire line of products, go to boschappliances.com or call 1-800-944-2904.
Copyright ©2021 BSH Home Appliances Corporation. All rights reserved. Bosch is a registered trademark of Robert Bosch GmbH.

Litho Date: 01/2021

HCREC5UC

Wall Chimney Recirc. Kit

300 / 500 Series - Stainless Steel



Features

		Accessory
Brand		Bosch
Product name / series name		
SKU		HCREC5UC
Internal article number		000000000011020666
EAN code		4242002797885
Product packaging dimensions (HxWxD) (in)		
		4
		5
Quantity per packing unit		
Standard number of units per pallet		
UPC code		825225909774
Product image		MCSA00741108_HCREC5UC_def.jpg

Technical Specification

Notes: All height, width and depth dimensions are shown in inches. *Please refer to installation instructions prior to making cutout. BSH reserves the absolute and unrestricted right to change product materials and specifications, at any time, without notice. Consult the product's installation instructions for final dimensional data and other details. Applicable product warranty can be found in a accompanying product literature or you may contact your account manager for further details.

For more information on our entire line of products, go to boschappliances.com or call 1-800-944-2904.
Copyright ©2021 BSH Home Appliances Corporation. All rights reserved. Bosch is a registered trademark of Robert Bosch GmbH.

Litho Date: 01/2021