

Features

- Set includes: Cabinet, precut Silestone® quartz vanity top, sinks, cabinet hardware, mounting hardware for sinks
- Vanity top has single faucet hole with pilot holes for optional 8" (203 mm) widespread faucet configuration at each sink location
- Three-way adjustable slow-close door hinges for easy cabinet access
- Full-extension 18" (457 mm) depth drawer with soft-close undermount slides for smooth opening
- Solid wood drawer with dovetail joint construction
- Vanity top is covered under the Silestone® 25-Year Limited Warranty
- Silestone® quartz provides exceptional durability and stain resistance, making it easy to maintain
- Caxton® Rectangle undermount sink has a streamlined design that is easy to clean
- Customize your storage with optional in-door and in-drawer accessories and medicine cabinet surrounds and side kits (sold separately)
- Optional vanity top side and backsplashes available (sold separately)

Material

- Solid and composite wood
- Silestone® quartz vanity top
- Vitreous china sinks
- Premium metal hardware for durability and reliability

Installation

- Wall-mount

Required Products/Accessories

- K-28265 Silestone® quartz 61" backsplash
- K-99565 Metal Vanity Legs
- K-99688 3" cabinet pull

Included Components

- K-28255 Silestone® 61" quartz vanity top with two rectangular cutouts
- K-EC20000 20-1/2" rectangular undermount bathroom sink (Qty 2)
- K-99688 3" cabinet pull (Qty 3)
- K-99548 60" wall-hung bathroom vanity cabinet



Codes/Standards



EPA TSCA Title VI/CARB P2

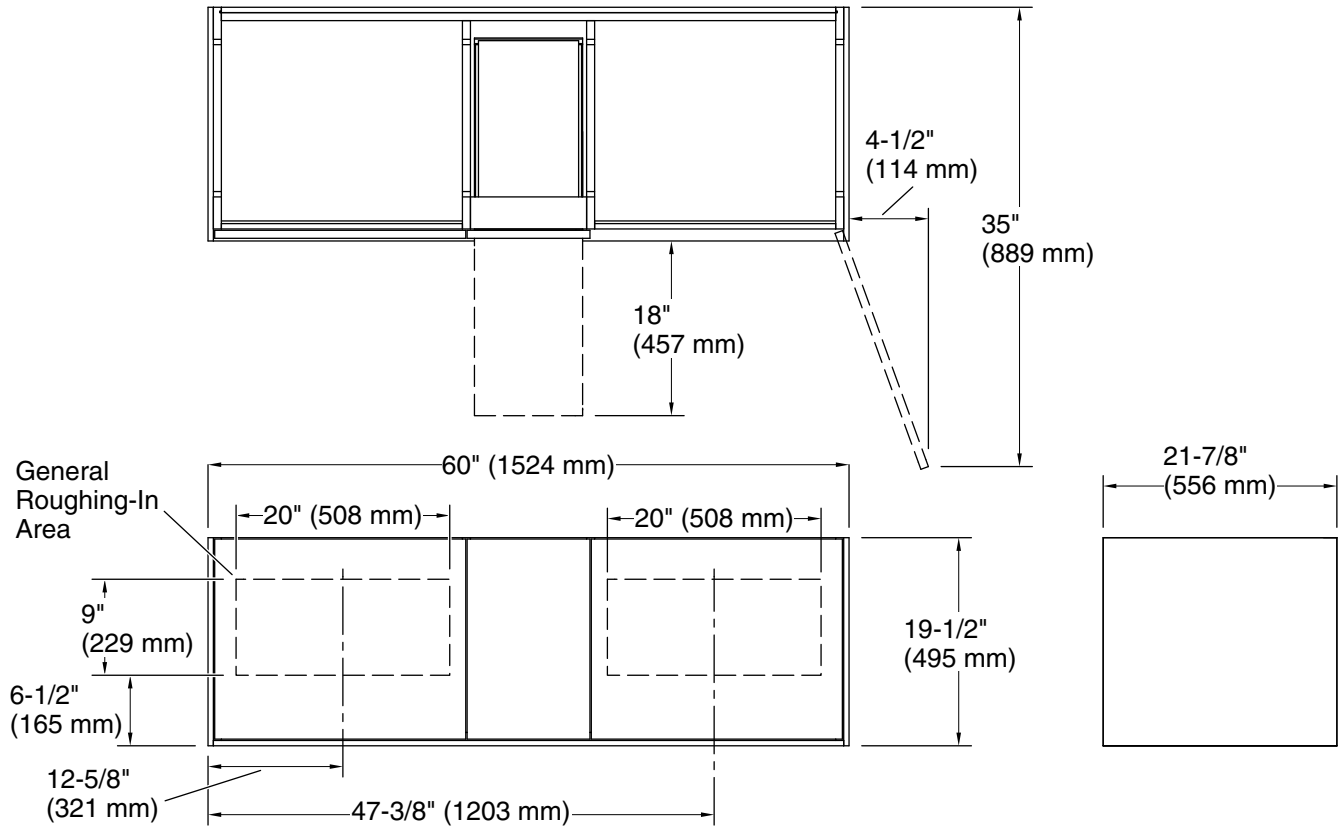
KOHLER® One-Year Limited Warranty

See website for detailed warranty information.

Available Colors/Finishes

Color tiles intended for reference only.

Color	Code	Description
	1WA	Linen White
	1WM	Walnut Flax



Technical Information

All product dimensions are nominal.

Lighting included: No