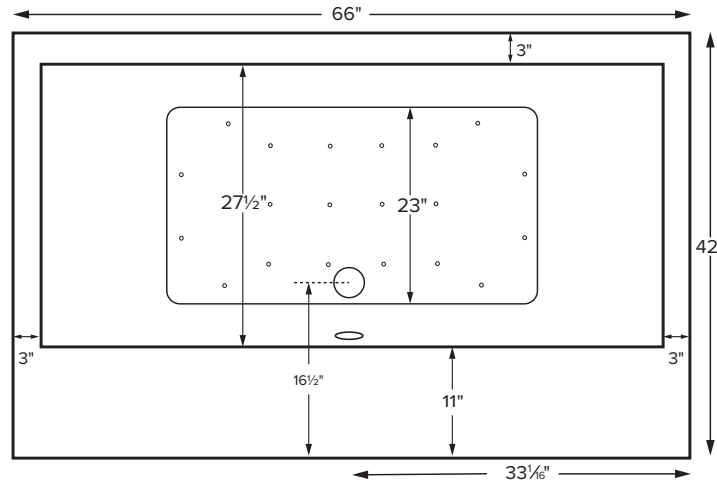




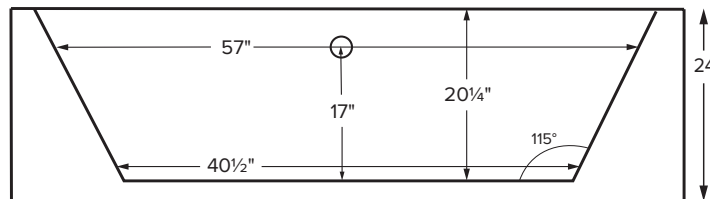
Available as a freestanding model or finished on 1, 2 or 3 sides for various installation applications.

**Metro 3**  
with Sculpted Finish®

<b>MODEL 175A</b>	
<b>66" x 42" x 24"</b>	
<b>FREESTANDING or ALCOVE</b> <i>Not recommended as a tub/shower combination</i> 80 gal to overflow	
<b>Acrylic CXL®</b>	<b>DoloMatte®</b>
160 lbs / 73 kg	<SOAKER> 180 lbs / 82 kg
Filling this tub to the maximum may require an above average size or dedicated water heater.	



Features a flat 11" deck surface on the drain side for mounting faucetry. Drain kit sold separately. Shown as Air Bath



<b>ELECTRICAL COMPONENTS &amp; SPECIFICATIONS</b>		
Hydrotherapy Package	Components Included	GFCI/110V
<b>Microbubbles</b>	Microbubbles pump	1-15 amp
<b>Air Massage</b>	heated blower	1-15 amp
<b>Microbubbles with Air</b>	Microbubbles pump, heated blower	1-20 amp
<b>Air Massage Elite</b>	heated blower, chromatherapy	1-15 amp
<b>Microbubbles with Air Elite</b>	Microbubbles pump, heated blower, chromatherapy	2-15 amp

Electrical requirements may change with the addition of optional therapy components. See specific option details or installation information. CSA Certified C/US; B45.5/IAPMO ANSI Z124.1 and ANSI 112.19.7

See the Installation & Operation Manual for more details.  
MTI's Customer Service: Monday-Friday 8am-6pm EST  
**800-783-8827** or [service@mtibaths.com](mailto:service@mtibaths.com)

**IMPORTANT ORDERING & INSTALLATION INFORMATION**

- Before ordering or installing, please consider future access to equipment.
- Unless ordering Sculpted Finish on 4 sides, please include a diagram specifying which sides will need to be finished, along with location of optional tile flange(s).
- Drain is not included with this tub model.
- When ordering an air bath, the air blower must be remote mounted.
- Microbubbles system components must be installed on a non-Sculpted Finish side. Components will extend beyond the perimeter of the tub. Call MTI for specific details regarding the desired installation before placing the order.
- Radiance placed on floor locations will affect placement of air jets.
- Hydrotherapy equipment may ship loose for remote installation. See package content on the following page for details. Specifications and configurations are subject to change without notice.
- All tubs are compliant with ASTM C 1028-07 coefficient of friction. DoloMatte meets ANSI A137.1/A326.3 coefficient of friction and AS HB198:2014 slip tests.

- Options and accessories may be packaged inside the tub crate. Always check packaging before discarding.
- All product measurements are ±1/2".
- Specifications and configurations are subject to change without notice.
- Measurements herein supersede all others published prior to publication date below.

CSA # MTDS-175A

CSA # MTDS-175D

©2025 by MTI Baths, Inc. Modification Rights Reserved

For more information on hydrotherapy packages please visit: [mtibaths.com/wellness/](http://mtibaths.com/wellness/)

**Metro 3**  
with Sculpted Finish®  
MODEL 175A  
66 x 42" x 24"

Hydrotherapy Packages	Package Contents	Sculpted Finish Sides	Acrylic CXL®		DoloMatte®	
			Part #	MSRP	Part #	MSRP
Soaker	Soaking bath - no jets, pre-leveled foam base	4-sides sculpted	<b>S175A4</b>	<b>\$9,330</b>	<b>S175D4</b>	<b>\$10,495</b>
		3-sides sculpted	<b>S175A3</b>	<b>\$8,635</b>	<b>S175D3</b>	<b>\$9,655</b>
		2-sides sculpted	<b>S175A2</b>	<b>\$6,970</b>	<b>S175D2</b>	<b>\$7,850</b>
		1-side sculpted	<b>S175A1</b>	<b>\$6,570</b>	<b>S175D1</b>	<b>\$7,300</b>
Microbubbles	1 infusion port, microbubbles pump, pre-leveled foam base	4-sides sculpted	n/a	n/a	n/a	n/a
		3-sides sculpted	<b>M175A3</b>	<b>\$16,590</b>	<b>M175D3</b>	<b>\$17,025</b>
		2-sides sculpted	<b>M175A2</b>	<b>\$13,170</b>	<b>M175D2</b>	<b>\$13,465</b>
		1-side sculpted	<b>M175A1</b>	<b>\$9,800</b>	<b>M175D1</b>	<b>\$9,950</b>
Air Massage	20 air jets, heated air blower, pre-leveled foam base	4-sides sculpted	<b>AST175A4</b>	<b>\$12,885</b>	<b>AST175D4</b>	<b>\$14,050</b>
		3-sides sculpted	<b>AST175A3</b>	<b>\$12,190</b>	<b>AST175D3</b>	<b>\$13,210</b>
		2-sides sculpted	<b>AST175A2</b>	<b>\$10,525</b>	<b>AST175D2</b>	<b>\$11,405</b>
		1-side sculpted	<b>AST175A1</b>	<b>\$10,120</b>	<b>AST175D1</b>	<b>\$10,850</b>
Air Massage Elite	30 air jets, heated air blower, Chromatherapy LED lighting, Spa Mode, pre-leveled foam base	4-sides sculpted	<b>AE175A4</b>	<b>\$14,730</b>	<b>AE175D4</b>	<b>\$15,895</b>
		3-sides sculpted	<b>AE175A3</b>	<b>\$14,040</b>	<b>AE175D3</b>	<b>\$15,055</b>
		2-sides sculpted	<b>AE175A2</b>	<b>\$12,375</b>	<b>AE175D2</b>	<b>\$13,250</b>
		1-side sculpted	<b>AE175A1</b>	<b>\$11,970</b>	<b>AE175D1</b>	<b>\$12,700</b>
Microbubbles with Air Massage	1 infusion port, microbubbles pump, 20 air jets, heated air blower, pre-leveled foam base	4-sides sculpted	n/a	n/a	n/a	n/a
		3-sides sculpted	<b>ASTM175A3</b>	<b>\$14,835</b>	<b>ASTM175D3</b>	<b>\$15,855</b>
		2-sides sculpted	<b>ASTM175A2</b>	<b>\$13,170</b>	<b>ASTM175D2</b>	<b>\$14,050</b>
		1-side sculpted	<b>ASTM175A1</b>	<b>\$12,770</b>	<b>ASTM175D1</b>	<b>\$13,500</b>
Microbubbles with Air Massage Elite	1 infusion port, microbubbles pump, 30 air jets, heated air blower, Chromatherapy LED lighting, Spa Mode, pre-leveled foam base	4-sides sculpted	n/a	n/a	n/a	n/a
		3-sides sculpted	<b>AEM175A3</b>	<b>\$16,590</b>	<b>AEM175D3</b>	<b>\$17,610</b>
		2-sides sculpted	<b>AEM175A2</b>	<b>\$14,925</b>	<b>AEM175D2</b>	<b>\$15,805</b>
		1-side sculpted	<b>AEM175A1</b>	<b>\$14,520</b>	<b>AEM175D1</b>	<b>\$15,250</b>

**Microbubbles system components must be installed on a non-Sculpted Finish® side.**

**Components will extend beyond the perimeter of the tub. Call MTI for specific details regarding the desired installation before placing order.**

For more customized applications, additional hydrotherapies may possibly be integrated in Sculpted Finish® tubs, depending on the types of therapy and the installation application. Visit [mtibaths.com](http://mtibaths.com) or call MTI at 800.783.8827.

RECOMMENDED SENSORY THERAPIES

**Chromatherapy**

(LE) **\$880** underwater lighting  
2 LED lights included

**Audiotherapy**

(STEREOBT) **\$1,535** 2 transducers with bluetooth and amplifier  
(BTREMOTE) **\$660** bluetooth remote

(STEREOH202) **\$1,740** 4 transducers amplifier not included

**Thermaltherapy**

(RAD100) **\$1,760** Radiance®  
2 heated zones included  
Zones may be specified on Metro tub deck.

For more information on options and accessories go to Acrylic Tub Options on mtibaths.com

Metro 3 with Sculpted Finish®  
MODEL 175A

Options <i>Must be ordered at time of purchase.</i>
<b>Standard Color</b> White (CWH) gloss Acrylic CXL, matte DoloMatte
<b>Textured, Slip-Resistant Bottom</b> (TXTBTM) <b>\$115</b> DoloMatte® exceeds ANSI A137.1/A326.3 and AS HB198 slip tests.
<b>Ozonator</b> (OZONE) <b>\$565</b> <i>Cannot be added to soakers or airbaths without Microbubbles system.</i>
<b>Virtual Spout</b> high-flow integrated tub filler (FPMJ) <b>\$500</b> <i>Must be located on same side as tub deck. Specify location when ordering.</i>

Installation Options <i>Must be ordered at time of purchase.</i>	
<b>Tile Flange</b> Factory Installed rigid ABS 1 Side (TFK1) <b>\$190</b> 2 Sides (TFK2) <b>\$205</b> 3 Sides (TFK3) <b>\$220</b> Field Install Kit (TFKNI) <b>\$205</b> Includes rigid ABS & adhesive	<b>IMPORTANT:</b> <i>Must specify flange location(s) on order of Factory-Installed Flange.</i>

Accessories
<b>Pillows</b> from <b>\$200</b>
<b>Teak Bath Mat</b> (TKMAT3018) <b>\$880</b> <i>Custom sizes also available. Contact MTI for details and pricing.</i>
<b>Teak Tub Tray</b> Slatted (TK-TRAY1) <b>\$540</b> Solid (TK-TRAY2) <b>\$615</b>
<b>Floor-Mounted High-Flow Tub Filler</b> Traditional Brushed Nickel (FILLTBN) <b>\$1,885</b>

## Drains & Overflow Kits *Toe Tap Rectangular Overflow must be ordered at time of purchase*

Cable Driven
<b>Drain Finishes</b> – PVC Drain Kit White/Bone/Biscuit (WOCDDW) <b>\$485</b> Chrome (WOCDD) <b>\$450</b> Brushed Nickel (WOCDBN) <b>\$540</b> Polished Nickel (WOCDPN) <b>\$595</b> Oil-Rubbed Bronze+ (WOCDDOR) <b>\$610</b> Polished Brass (WOCDBR) <b>\$760</b> Special Finishes* (WOCDSF) <b>\$1,250</b> <i>MTI does not offer a brass body cable drain kit.</i>
<b>Lift &amp; Turn</b> <b>Drain Finishes</b> – PVC Drain Kit Chrome (WOC) <b>\$205</b> White (WOW) <b>\$270</b> Brushed Nickel (WOBN) <b>\$335</b>

Toe Tap
<b>Round Overflow</b> – PVC Drain Kit Chrome (WOTTC) <b>\$420</b> Brushed Nickel (WOTTBN) <b>\$425</b> Polished Nickel (WOTTPN) <b>\$425</b> Special Finishes* (WOTTSF) <b>\$1,260</b>
<b>Round Overflow</b> – Solid Brass Drain Chrome (WOTTSBC) <b>\$895</b> Brushed Nickel (WOTTSBBN) <b>\$895</b> Polished Nickel (WOTTSBPN) <b>\$895</b>
<b>Rectangular Overflow</b> – PVC Drain Kit Chrome (WOTRC) <b>\$520</b> Brushed Nickel (WOTRBN) <b>\$475</b> White (WOTRW) <b>\$580</b>

## Slim-Line Overflow with Toe Tap Drain *Must be ordered at time of purchase.*

- Low profile overflow is factory installed
- Overflow measures 4.5" x 1"
- Provides a deeper soak
- Not available for commercial applications

### Slim-Line Overflow with Toe Tap Drain

PVC Drain
Chrome (SLOT) <b>\$550</b>
Brushed Nickel (SLOTBN) <b>\$585</b>
Polished Nickel (SLOTBN) <b>\$615</b>
White (SLOTW) <b>\$475</b>

### Slim-Line Overflow with Toe Tap Drain

Solid Brass Drain
Chrome (SLOTSBC) <b>\$1,025</b>
Brushed Nickel (SLOTSBBN) <b>\$1,030</b>
Polished Nickel (SLOTSBPN) <b>\$1,030</b>
White (SLOTSBW) <b>\$1,065</b>



Optional Slim-Line overflow

\* MTI has selected an oil-rubbed bronze finish that is compatible with Delta and many other manufacturers. To ensure best match, order as a Special Finish and submit a sample.  
\* Allow 2-4 weeks lead time for Special Finishes. Send sample for best match.